

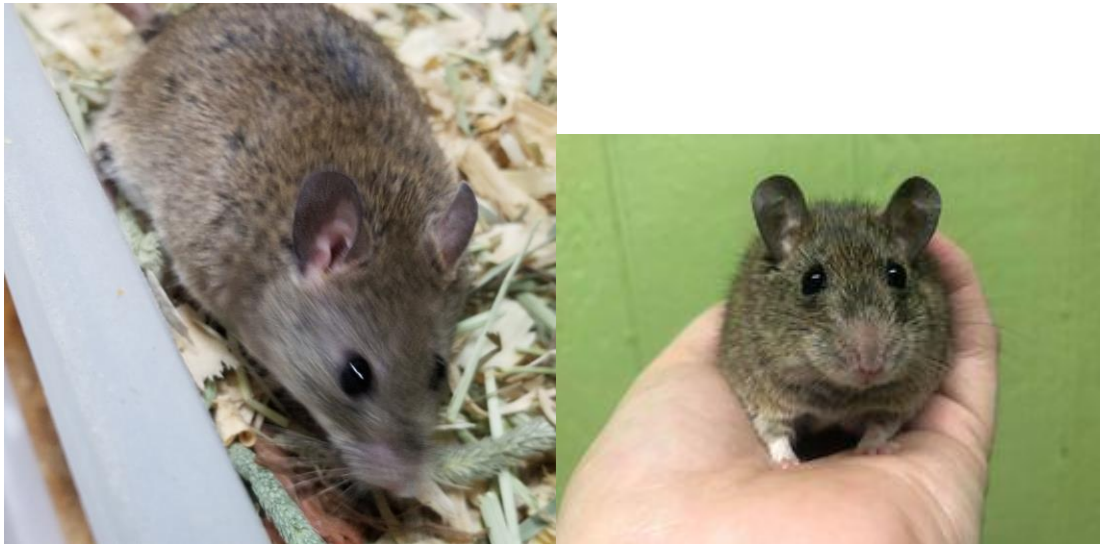
ASF Color Guide

Like most rodents, ASF have fairly predictable genetics with the majority being simple recessive traits or the result of line breeding. Below we've compiled some photo examples of various colors, patterns, and the genetic codes that are commonly referenced.

COLORS

Agouti (A-)

Wild type coloration, quite dark brown fur with banding/ticking of lighter and darker shades of brown, tan, and black on each hair shaft. Differentiated from dark cinnamons by the dark/black pigmentation on the ears.



Cinnamon (A- bb)

Lighter brown coloration, brown fur with banding/ticking of lighter and darker shades of brown, tan, and black on each hair shaft. Differentiated from agouti by the pink/light pigmentation on the ears. Sometimes the color is almost indistinguishable from agouti aside from the ears.



Top - Agouti Self, Bottom - Cinnamon Self



Left - Agouti Self, Middle & Right - Cinnamon Self

Argente (A- B- pp)

Argente is a lighter golden/yellow shade with pink eyes. Will appear more orange/yellow in person and in some lighting situations. Undercoat has a blue-ish tone.



Cinnamon-Argente (A- bb pp)

The color is almost identical to Argente, but tends to have a slightly more blue cast to the under coat and is slightly less bright side by side (see picture 2). If you produce Argentes from a pair of adults that are carriers/non-Argente that are both Cinnamon (light ears), then the offspring will all be Cinnamon-Argente. If your adults are Argente, it may be difficult to tell if yours are Cinnamon or not unless bred to non-Argente ASF.



Cinnamon Argente



Source: <https://ball-pythons.net/forums/showthread.php?207146-ASF-colour-guide>, Rhasputin
Top: Argente, Bottom: Cinnamon-Argente



Top center adult - Argente, Bottom Center adult- Cinnamon Argent Saddle Variegated

Platinum (A- B- P- R- W*W*)

Platinum is a line-bred ASF with an Agouti base that has been bred over time for high white genetics. Over several generations breeding the highest white individuals together, you will end up with all or nearly all white ASF with dark ears and dark eyes. The W*W* genetic comes in from the markings section below.



Source: <https://ball-pythons.net/forums/showthread.php?207146-ASF-colour-guide>, Rhasputin



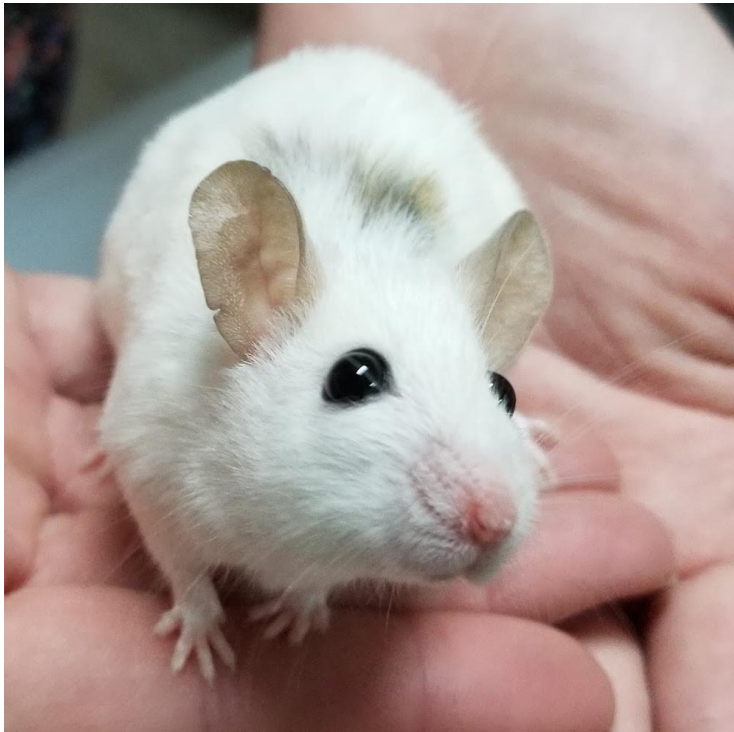
Not quite all white, but a line in progress toward high white displaying the Agouti base with dark ears and black eyes.

Black Eyed White / Black Eyed High White (A- bb P- R- W*W*)

Black Eyed White is a line-bred ASF with a Cinnamon base that has been bred over time for high white genetics. Over several generations breeding the highest white individuals together, you will end up with all or nearly all white ASF with light ears and dark eyes. The W*W* genetic comes in from the markings section below.



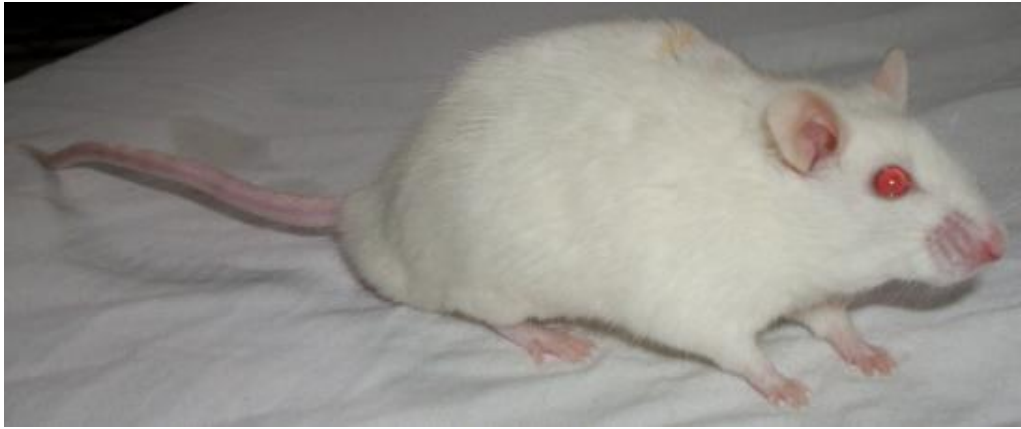
Source: <https://ball-pythons.net/forums/showthread.php?207146-ASF-colour-guide>, Rhasputin



Not quite all white, but a line in progress toward high white displaying the Cinnamon base with light ears and black eyes.

Pink Eyed White / Pink Eyed High White (A- B- pp R- W*W*)

Pink Eyed White is a line-bred ASF with an Argente base that has been bred over time for high white genetics. Over several generations breeding the highest white individuals together, you will end up with all or nearly all white ASF with light ears and pink eyes. The W*W* genetic comes in from the markings section below.



Source: <https://ball-pythons.net/forums/showthread.php?207146-ASF-colour-guide>, Rhasputin
Note - small colored marking still visible; this is fairly common working with high white

MARKINGS

Self

Self is the term used in rodents for a solid colored animal with no white markings. The belly will be a lighter color than the top side fur, but not white. This can be any of the base colors.



Head-Spot Variegated (Ww)

This marking causes a white spot or line from the nose up to the ears between the eyes; frequently also has white along the jaw toward the ears. Belly and rump may have some white spotting. Sometimes also known as the “possum” pattern.



Saddle Variegated (WW)

This marking is an animal with a white head typically past the ears and a white rump. Can have some colored spotting in the white rump and often has “eyebrows” of color above the eyes. This is also frequently called “pied”.



High Whites (W^*w , W^*W , W^*W^*)

The high white marking is a line bred addition to the two variegated markings. There are additional hidden genetics at play increasing the amount of white and are associated with the Head Spot and Saddle variegations with the * symbol. The W^*W^* indicates homozygous for the variegated trait with additional white which will eventually result in all white animals.



Source: <https://ball-pythons.net/forums/showthread.php?207146-ASF-colour-guide>, Rhasputin



Examples of ASF in-progress to being full white - small markings on the backs. Picture contains Agouti, Cinnamon and Argente.

SOURCES

Pictures marked are sourced from user Rhasputin on the Ball-Pythons.net forum
<https://ball-pythons.net/forums/showthread.php?207146-ASF-colour-guide>

Remaining pictures are of Savannah Bell's ASF